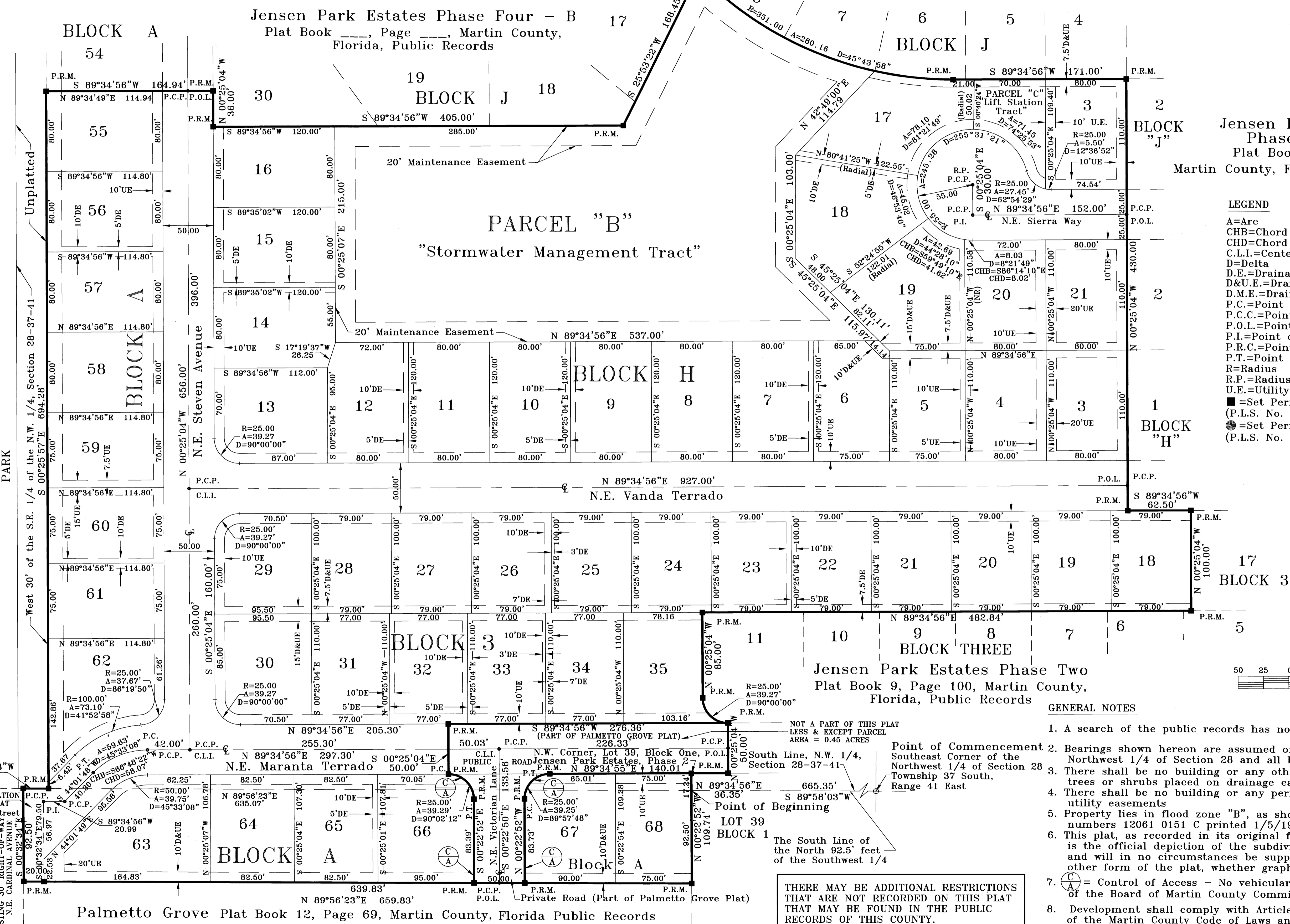
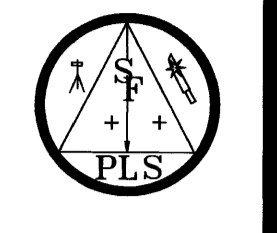
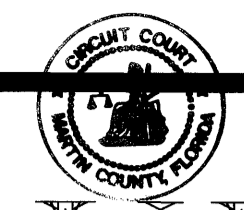


JENSEN PARK ESTATES PHASE FOUR - A

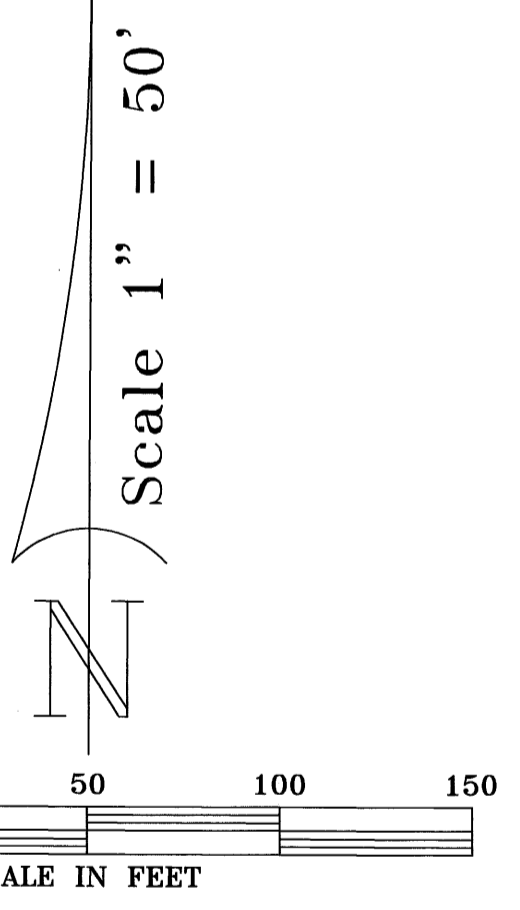
A SUBDIVISION Located in Section 28, Township 37 South, Range 41 East, Martin County, Florida

*Filed for Record
This 20th day of November, 1998
in Plat Book 14, Page 50
Public Records of Martin Co.
Florida.
7:10 *
MARSHA S. NECK
Clerk of Circuit Court
By Charlotte Buckley*



Jensen Park Estates
Phase Three-A
Plat Book 11, Page 42,
Martin County, Florida Public Records

- LEGEND**
- A=Arc
 - CHB=Chord Bearing
 - CHD=Chord Distance
 - C.L.I.=Centerline Intersection
 - D=Delta
 - D.E.=Drainage Easement
 - D&U.E.=Drainage & Utility Easement
 - D.M.E.=Drainage Maintenance Easement
 - P.C.=Point of Curvature
 - P.C.C.=Point of Compound Curvature
 - P.O.L.=Point on Line
 - P.I.=Point of Intersection
 - P.R.C.=Point of Reverse Curvature
 - P.T.=Point of Tangency
 - R=Radius
 - R.P.=Radius Point
 - U.E.=Utility Easement
 - =Set Permanent Reference Monument (P.L.S. No. 4557)
 - =Set Permanent Control Point (P.L.S. No. 4557)



GENERAL NOTES

1. A search of the public records has not been done by this office.
2. Bearings shown hereon are assumed on the South line of the Northwest 1/4 of Section 28 and all bearings are relative thereto.
3. There shall be no building or any other kind of construction or trees or shrubs placed on drainage easements.
4. There shall be no building or any permanent structures placed on utility easements.
5. Property lies in flood zone "B", as shown on FEMA/FIRM map numbers 12061 0151 C printed 1/5/1984.
6. This plat, as recorded in its original form in the public records and will in no circumstances be supplanted in authority by any other form of the plat, whether graphic or digital.
7. (C) = Control of Access - No vehicular access without the approval of the Board of Martin County Commissioners.
8. Development shall comply with Article 3, LDR Zoning in Section 3.7 of the Martin County Code of Laws and Ordinances.

THERE MAY BE ADDITIONAL RESTRICTIONS THAT ARE NOT RECORDED ON THIS PLAT THAT MAY BE FOUND IN THE PUBLIC RECORDS OF THIS COUNTY.

Northwood S/D Plat Book 1, Page 55 Martin County, Florida Public Records
 Pinecrest Lakes Phase VII Plat Book 10, Page 97, Martin County, Florida Public Records
 Palmetto Grove Plat Book 12, Page 69, Martin County, Florida Public Records

SOUTH FLORIDA
 PROFESSIONAL LAND SURVEYORS
 2325 N.E. DIXIE HIGHWAY - JENSEN BEACH, FLORIDA 34957
 VOICE (561) 334-1800 FAX (561) 334-8772

NO.	REVISIONS	DATE	BY
1			
2			
3			
4			
5			

DRAWN BY: Peter Frayling	DATE: 12/12/97
DATE IN FIELD:	PG.
FIELD BOOK:	SCALE: 1" = 50'
CHECKED BY: T.H.M.	

JOB NUMBER	96-412
SHEET	3
OF	3